



The Hall Space

INFORMATION BOOKLET



Welcome to Soul Space Brisbane

Beautiful space hire if you're a wellness, health or creative professional who wants a space for connection, creativity, growth and awareness.



23 Parker Street
Newmarket, Qld 4051



07 3352 6155
0403 534 637



hello@soulpacebrisbane.com.au



soulpacebrisbane.com.au



[@soulpacebrisbane](https://www.facebook.com/soulpacebrisbane)

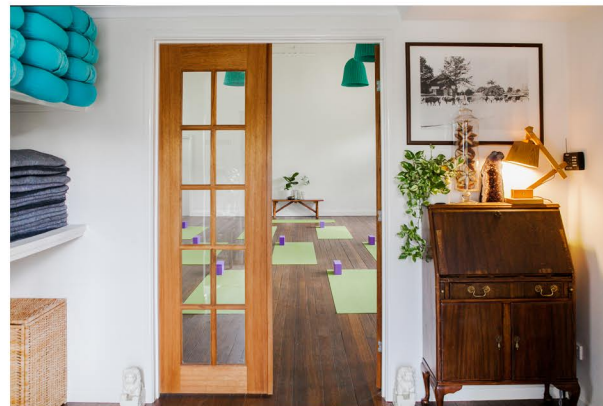
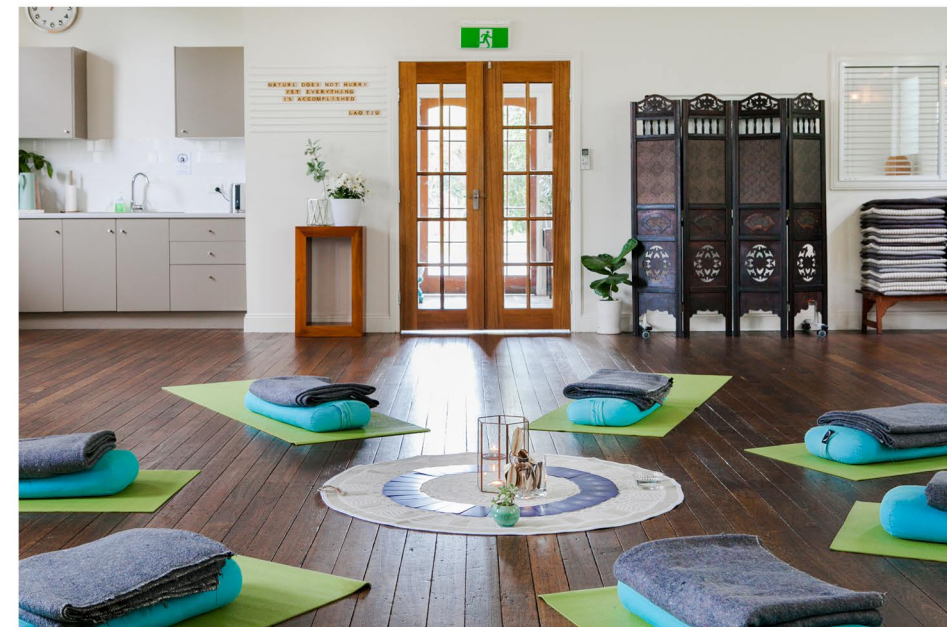


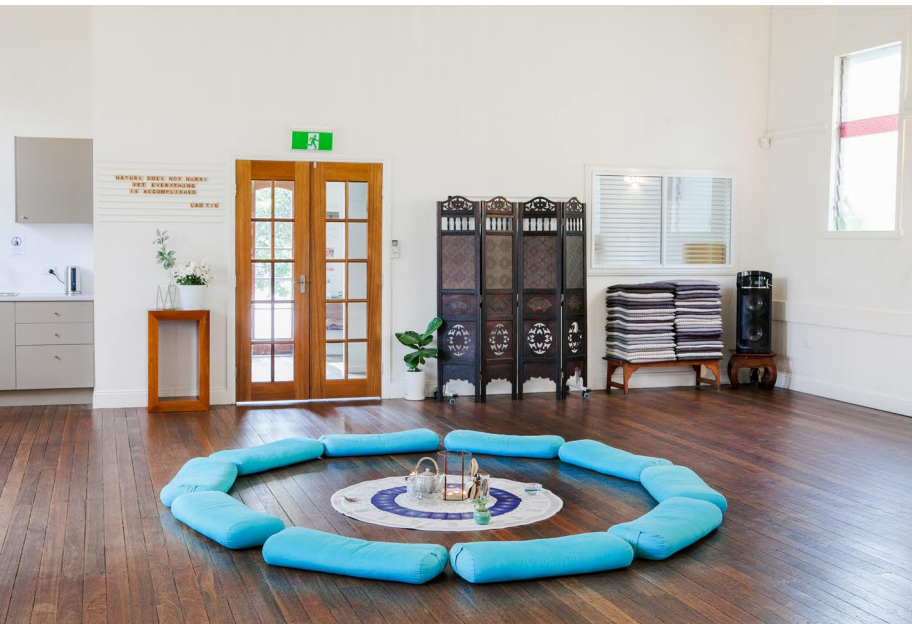
Soul Space Brisbane | The Hall Space



The hall offers something of the old and timeless - the poetic. Gorgeous timber floors under foot. High reaching ceilings overhead. An abundance of soft natural light and fresh air cascades through the hall. Clear aesthetic touches evoke beauty, magic and the space offers itself to your creative genius. On entering, one feels a warm welcome - a tangible vitality and aliveness.

The hall thrums with potential lending itself as a blank canvas for a wide variety of courses, workshops, classes, gatherings and more.

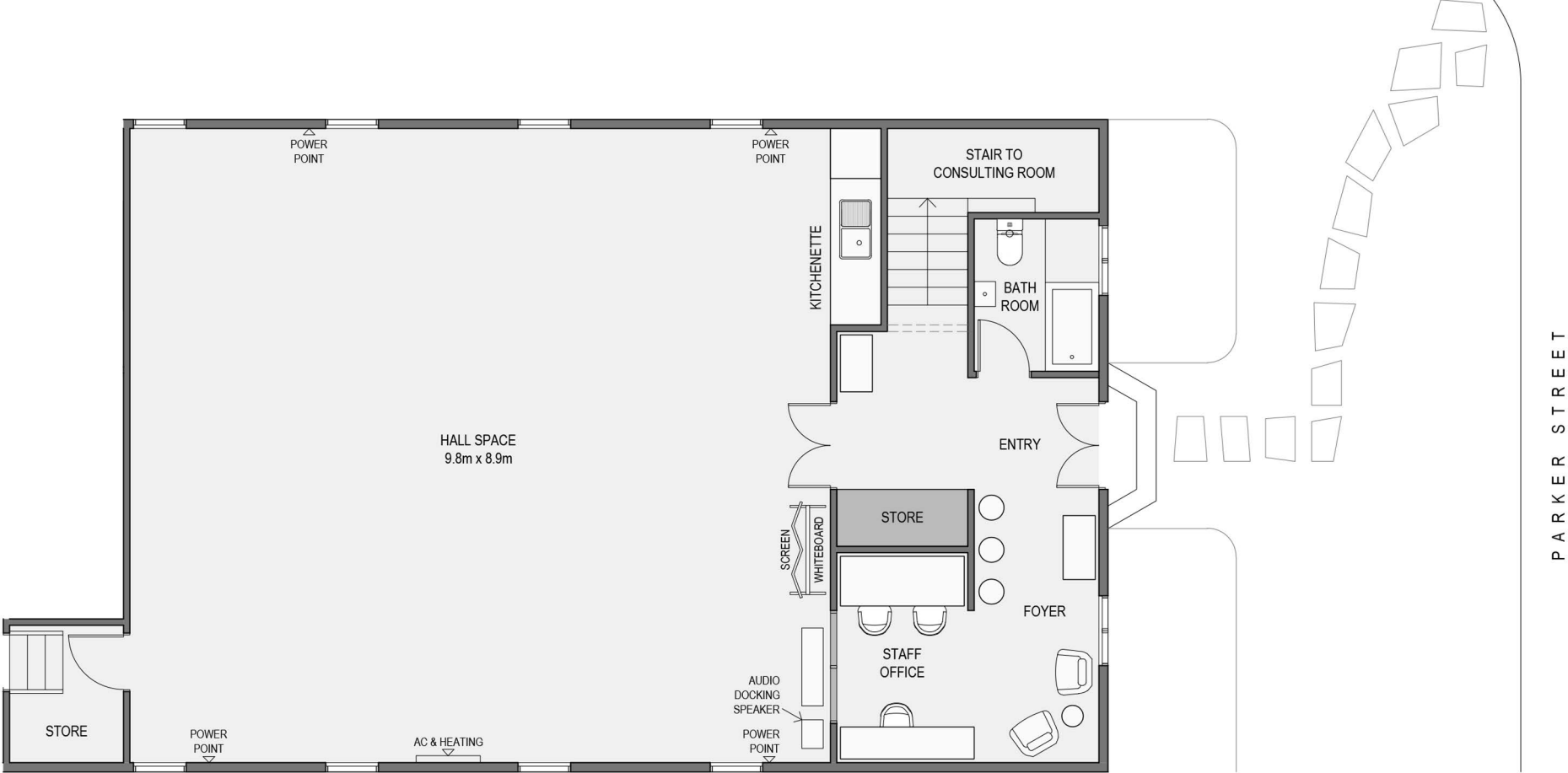




Brisbane's leading space for wellness, health and creative professionals who run:

- + Workshops
- + Courses
- + Events
- + Group Classes
- + Meditation
- + Trainings
- + Team Meetings
- + Lectures
- + Launches
- + Conferences
- + Photography
- + Film Shoots
- ...and more

SOUL SPACE BRISBANE FLOORPLAN GROUND LEVEL



SOUL SPACE BRISBANE FLOORPLAN LEVEL 1



THE CONSULT ROOM

Upstairs, Soul Space Brisbane also provides a consult room for regular hire. Please see website for further information.



SHARED FOYER AREA

Upon entry, Soul Space Brisbane has a small foyer/waiting area. This is a shared space with the upstairs consult room. When hiring the hall space, furniture or use of the foyer area for your event is not to be used without express permission.



SHARED TOILET FACILITY

Soul Space Brisbane has one uni-sex toilet/bathroom facility located in the foyer/entry area. This is a shared facility with anyone using the upstairs consult room for 1:1 sessions.

FEATURES

| | |
|--------------------------------------|---|
| Air conditioning | ✓ |
| Heating | ✓ |
| Ceiling fans | ✓ |
| Dimmable lighting | ✓ |
| High ceilings (4.3m) | ✓ |
| WIFI access (upon request) | ✓ |
| Audio docking speaker | ✓ |
| Whiteboard (large on wheels) | ✓ |
| Projector (at additional cost) | ✓ |

KITCHENETTE FACILITIES & QTY'S

| | |
|---|-------|
| Refridgerator | ✓ |
| Microwave | ✓ |
| Kettle | ✓ |
| Urn | ✓ |
| Mugs | 24 |
| Glasses | 24 |
| Crockery, cutlery | 12/ea |
| Water jugs | 4 |
| Water filter (Brita) | 2 |
| Basic tea, coffee, sugar (bring own milk) | ✓ |

BOOKING EXCLUSIONS (see hall space hire agreement for full terms & conditions)

For clarity, the following is NOT included when hiring the hall space;

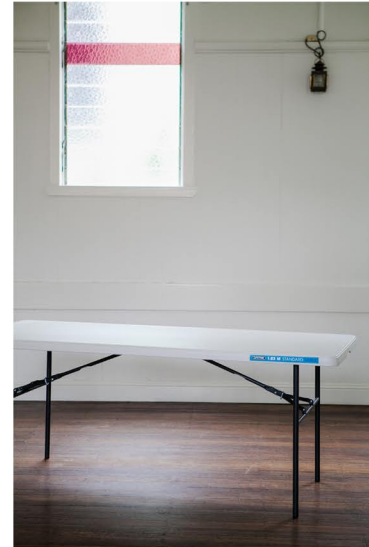
- Extra time for setting up and/or packing down. Please take this into consideration when booking time required.
- Furniture or items from the office/foyer area as well as storage of your items in the office area. Any items are not to be moved or used as part of your event without express permission.
- Food and/or drinks aside from basic tea, coffee.
- Masking tape for safely securing extension leads and other equip. to the floor.
- Any staff





ITEMS & QUANTITIES

| | |
|---|----|
| Chairs - high quality..... | 30 |
| Chairs - plastic (upon request) | 40 |
| Trestle Table (180cm x 76cm) | 6 |
| Trestle Table (120cm x 60cm) | 1 |
| Trestle Table (100cm x 50cm) | 24 |
| Trestle Table (240cm x 76cm) upon request | 4 |
| Cushions | 50 |
| Yoga Mats | 35 |
| Yoga Blankets | 35 |
| Bolsters | 21 |
| Yoga Blocks | 24 |
| Yoga Straps | 23 |





LOCATION

Only a stone's throw from Enoggera Creek and green parklands, Soul Space Brisbane is an urban sanctuary perfectly nestled just 5kms from the heart of Brisbane city.

The elegantly restored hall stands nobly amidst beautiful old Queenslanders and immediately upon arrival stirs feelings of kinship and community.



PARKING

Parking is free, on-street parking on either **Parker Street, Foster Street or Kelvin Street.** We are not in a heavily built up area so parking is generally quite easy, available and very close by.



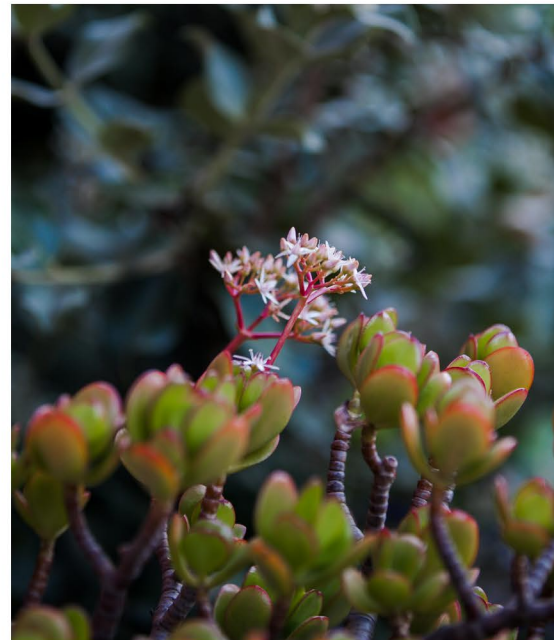
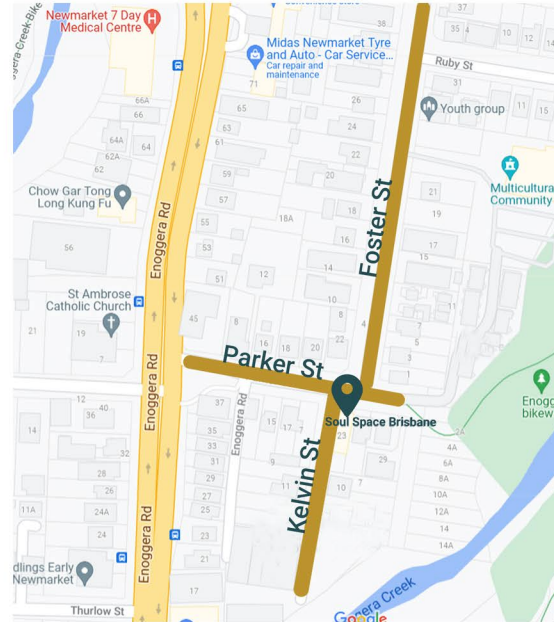
BUS

450m to main bus stop on Enoggera Road.



TRAIN

2.8km to Windsor train station, 1.2km to Newmarket train station.





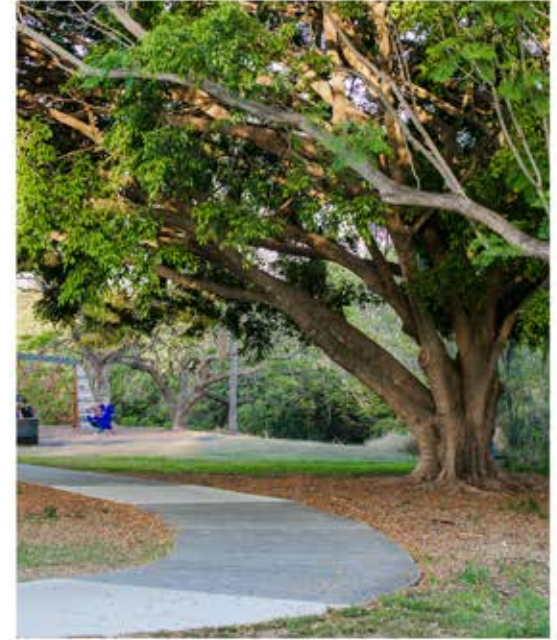
PARKLANDS

A few steps from the door we also have some beautiful parkland. This is a great place to take lunch. Some facilitators also use this space as a breakout area for certain activities within their workshop.



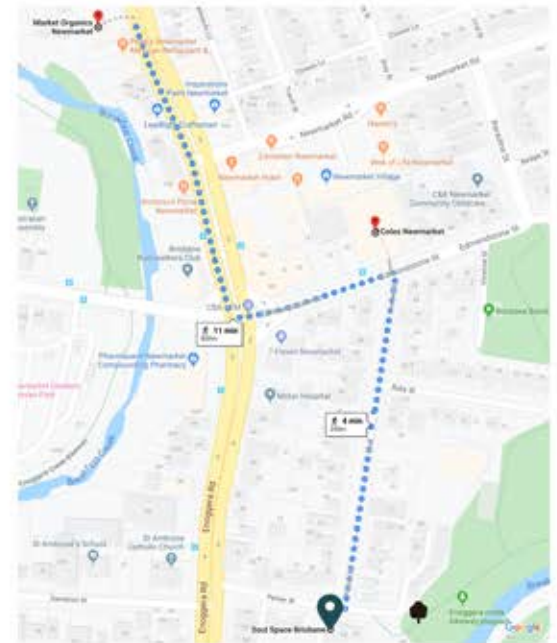
LOCAL ACCOMMODATION OPTIONS

Ibis Budget Windsor Brisbane: 3.8km away (10 min drive or 30min lovely walk along the Enoggera Creek bikeway). For other options search Brisbane City or South Bank: 5km away and close to main public transport options. AirBNB is another popular option. Search suburbs, Newmarket, Wilston, Herston, Ashgrove or Kelvin Grove.



LOCAL EATERIES

We are located just 350m (4min walk) from Newmarket Village. Here you will find a huge range of food options as well as Coles supermarket. Also, close by (800m, 2min drive) is health food store and cafe, Market Organics .



FAQ



Is the hall space wheel chair accessible?

Unfortunately, Soul Space Brisbane is not fully wheelchair accessible. While the width of the front door entrance and hall space entrance are wide enough for a wheelchair to enter, there is one step at the front door. The toilet is not big enough to accommodate a wheelchair.



Can I use amplification?

A microphone to amplify voice is not permitted. The hall has great acoustics which assists facilitators in projecting their voice.



Are there any noise level restrictions I need to be aware of?

Noise levels of your event are taken into consideration due to the surrounding neighbourhood. Amplification is not permitted. Lower noise levels are required for events past 7pm.



How many toilets does Soul Space have?

We have the one unisex toilet/bathroom. This tends to only create a problem if you have a full day event with over approximately 35 people.



Does Soul Space offer promotional support for my event?

Marketing offered when hiring the hall space is minimal. You are welcome to leave flyers or brochures about your upcoming event in the foyer at Soul Space Brisbane. The opportunity to share your event to the Soul Space Brisbane Facebook event page is available upon request.



Does Soul Space provide catering?

No, we don't organise catering services. You are welcome to have caterers deliver food as long as it is delivered in the time frame in which you are hiring the space. If participants are bringing their own food, we have a fridge and microwave within the hall space kitchenette for use.



If I use a projector do I need to bring a screen?

No, the back wall is white and is perfect to project your presentation where you wish. There are block out blinds on one side of the hall to darken the space from the afternoon sun if needed. You can also hire our projector for a small fee.

I want to book the hall space, what next?



Call, email or submit a contact form on the website.



Availability of dates and suitability confirmed.



Receive booking and agreement form to complete.



Invoice sent. Payment required to confirm booking.



Happy promoting. Promote your event to your audience.



*"How you and your clients
feel in a space matters.
You do what you do best and
I'll provide a space that feels
calm, clear, grounded,
nurturing and healing."*

Jodie de Rome - Founder



23 Parker Street
Newmarket, Qld 4051



07 3352 6155
0403 534 637



hello@soulpacebrisbane.com.au



soulpacebrisbane.com.au



@soulpacebrisbane

Contact:

Jodie de Rome - Founder